



MONDOFIN
FINANCIAL ENGINEERING



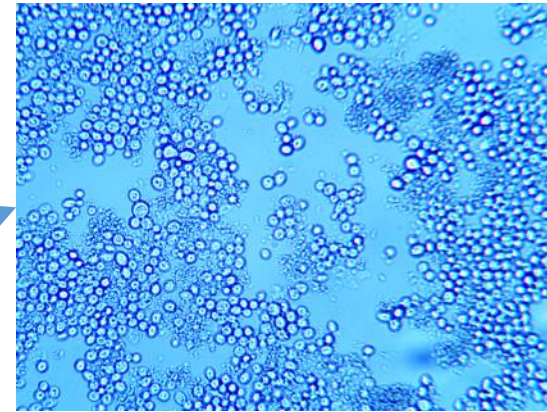
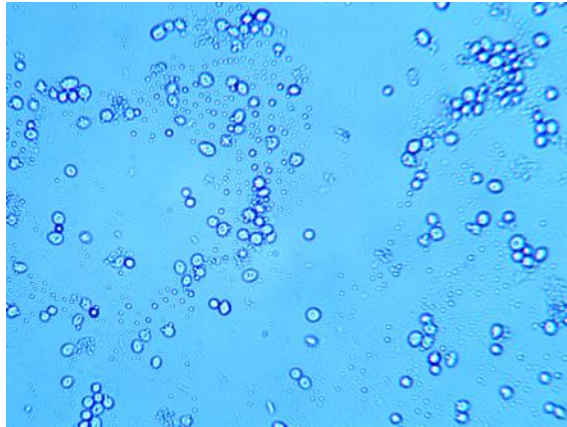
Research work. Yeast ordered by Czech brewing company Budvaiser Budvár (Czech. Budějovický Budvar)



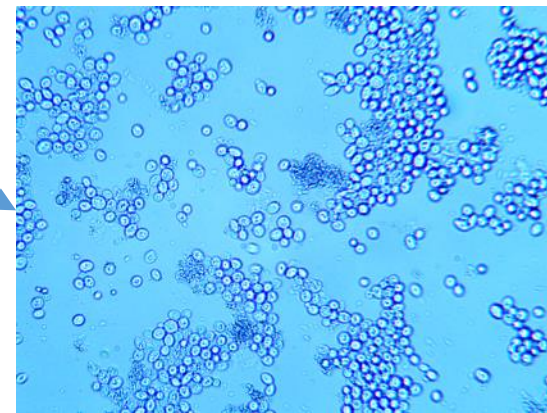
Research work Yeast

The application of "IWM" in the disposal of bard waste generated in the alcohol, brewing and sugar industries.

Anaerobic yeast culture for beer production



Asset (after 8 hours)



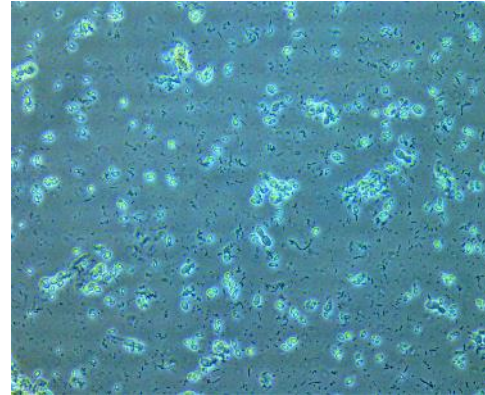
Control (after 8 hours)

The images show a significant growth of active culture after "IM" processing. The total protein content is more than 40%.

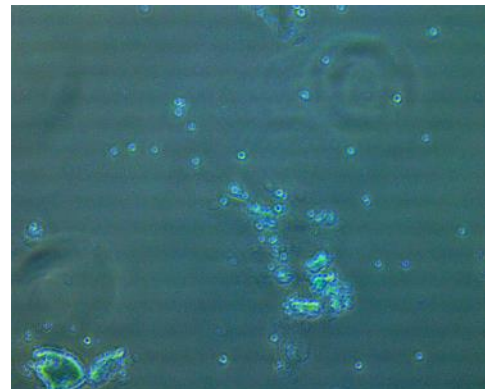
Research work Yeast

The aerobic culture *Rhodospiridium diobovatum* is used to produce forage protein from bard of alcohol production.

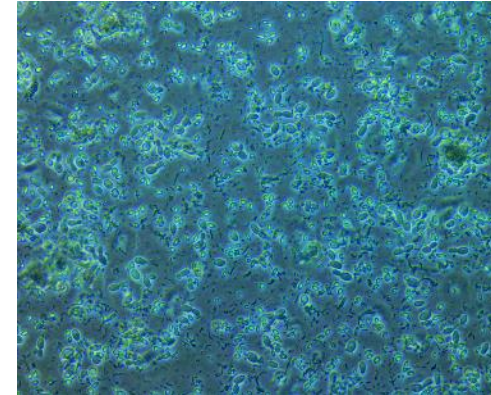
Asset 16.00



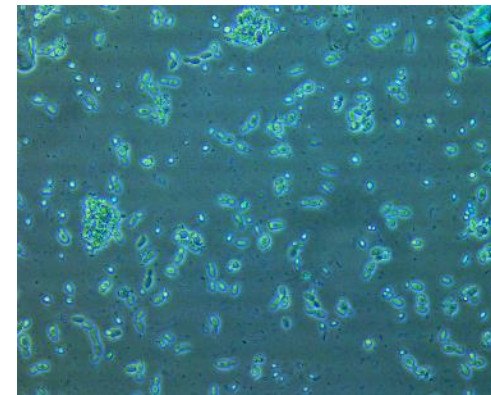
Control 16.00



Asset 18.00



Control 18.00



The images show a significant growth of active culture after "IM" processing.
The total protein content is more than 40%.

Research work Yeast

Conclusions

"IWM" processing technology:

- It has a significant positive effect on the vital activities of tested cultures;
- It opens up wide possibilities for the use of cultures with a restored genome in industrial biotechnology;
- Reduces the fermentation time in multiple;
- Increases the number of cycles of effective use of culture;
- Increases protein content (for the production of fodder protein);
- Allows for deep processing of alcohol or brewing wastes;
- Reduces or completely eliminates the generation of industrial waste requiring recycling.
- The technology does not use gene modification;
- The technology is ready for industrial use.

Contact information:

Business address: Shaikh Rashid Tower, Dubai
World Trade Center, Dubai, UAE

Alexey Sakharov

Phone: + 7 (917) 244-15-77

E-mail: usm7@yandex.ru



MONDOFIN
FINANCIAL ENGINEERING